



birmingham
joineryltd

Bespoke Joinery • Door Manufacturer

FD60 DOORS

Installation Instructions



Timber Fire
Door
Manufacture



0012



INSTALLATION INSTRUCTIONS

Before you begin please check the following:

- The sizes are correct and everything you have ordered is included
- There is no visible damage to the protective packaging

Please inform our sales team immediately if there are any discrepancies.

GENERAL

If any of the following installation guidelines are unclear please contact us immediately for clarification.

This door has been tested to BS 476: PART 22: 1987 and is certified BM TRADA as achieving Fire Resistance up to 60 minutes when used in accordance with the following conditions. To identify this, the leaf carries plastic plugs which describe the period of fire resistance issued under the BM TRADA Q Mark certification scheme. As such, these plugs should never be removed from the product. Birmingham Joinery strongly recommends that our products are installed by a qualified carpenter/joiner and a member of a recognised quality assured installation scheme.

STORAGE & HANDLING

- Doors must be handled by at least 2 people
- Doors must be stored on a clean, dry and level surface to avoid any warping or bowing
- Use at least 3 load bearers to allow equal weight distribution
- Do not store doors in direct sunlight as this may affect the shade of the veneer
- Doors must not be store or fitted in a building with wet trades. All plastering must be finished and given appropriate time to dry before doors are fitted
- Planed edges on prefinished doors must be revarnished to avoid moisture absorption
- All unfinished products must be finished promptly to avoid moisture absorption
- Door and frame can be supplied in kit form for assembly on-site

ASSEMBLY ON SITE

If door and frame is supplied in Kit form, and carries a Blue Outer/Green Inner plug, all components supplied by Birmingham Joinery must be installed and assembled in line with these installation guidelines and the relevant global assessment. Only ironmongery that is approved in the global assessment may be used. Contact Birmingham Joinery for guidance and further details. Only the intumescent seals provided by Birmingham Joinery must be used. Any replacing or removal may invalidate certification.

If the door and frame is supplied as a Factory Hung door set and carries a Blue Outer/Silver inner plug it must be installed in line with these installation guidelines and the relevant global assessment. Only the ironmongery supplied with the set may be used. Replacing or substituting ironmongery may invalidate the fire rating and certification. Any ironmongery supplied loose must be fitted in line with manufacturers instructions.



DOOR GAPS

Leaf

When fitted, the gap between door and frame at the top may be minimum of 2mm and a maximum of 4mm.

Any planning or trimming of edges of doors may void the certification and invalidate the fire rating. Please contact Birmingham Joinery for guidance if planning is required.

Threshold

A maximum gap of 8mm between bottom of leaf and top of floor covering. 8mm is the maximum tolerance for fire resistance only. Where smoke control is required, a maximum of 3mm or a suitable fire performance tested threshold drop down seal should be fitted. The following types of seals may be recessed into the bottom edge of the door leaves without compromising the performance: Norseal Ltd. NOR810. Lorient Polyproducts Ltd. IS8010s. Raven Products Ltd. RP8. Athmer Schall-Ex Duo L-15. Halspan SLS-DRP-100 range.

Structural Opening

Gaps up to 10mm must be sealed on both sides with a 10mm depth of acrylic intumescent mastic, fire tested for this application to BS 476: Part 22: 1987 or BS EN 1634-1. Joint must be fitted with 15mm thick overlapping at least 15mm each side.

Gaps between 10mm and 20mm must be tightly packed with mineral fibre, capped on both sides with a 10mm depth of acrylic intumescent mastic, fire tested for this application to BS 476: Part 22: 1987 or BS EN 1634-1. Architraves are optional.

Gaps up to 20mm filled with proprietary fire stopping product (e.g. Blue60 or similar). Products must be tested for this application to BS476: Part 22: 1987 or BS EN 1634-1. Joint must be fitted with 15mm thick architraves overlapping at least 15mm each side.

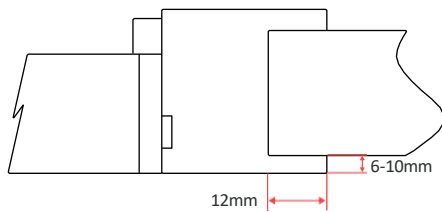
FRAME

Doors must be installed into frames with a minimum density of 640 kg/m³ in Hardwood or 700 kg/m³ if MDF. Frames must be a minimum of 70 x 32mm. Single acting door frames must incorporate a 12mm deep rebate or planted stop. Frames may be morticed and tenoned, mitred, half lapped or butted with no gaps.

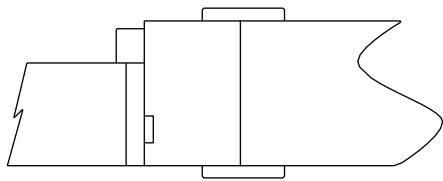


The following diagram shows acceptable and unacceptable frame installations.

Permitted

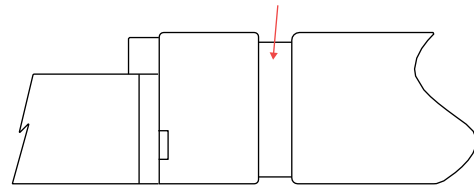


6-10mm is the maximum a frame is permitted to be proud of the structural surround when combined with a 12mm bolection return. Projecting frames outside these dimensions will require specific test evidence or assessment.

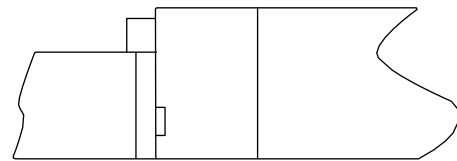


Architraves overlapping the frame to structural surround junction are always permitted where required but may be mandatory depending on the size of frame to surround junction gap and the fire stopping used.

Max 10cm x 10cm shadow gap with 2mm intumescent mastic capping or 10x4mm PVC encased intumescent seal

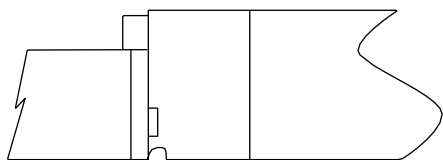


Shadow gaps are permitted as shown in the above diagram providing the frame to structural surround is infilled with timber of the same density as the frame or a non-combustible material such as plasterboard. Other shadow gap dimensions will require specific test evidence or assessment.

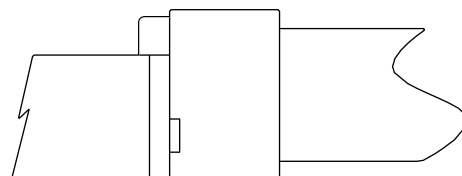


Depending on the size of the frame to surround junction gap and the fire stopping methods used, it may be permitted to install doorsets without architraves.

Not Permitted



Quirks between the leaf and frame are not permitted without specific test evidence or assessment due to potential for increased charring of the leaf to frame gap.



Projecting frames without bolection returns are not permitted without specific test evidence or assessment due to the potential for increased charring to the back of the frame.



ARCHITRAVE

Where architrave is required it must have a minimum density of >450kg/m³.

PVC U architrave is not permitted.

FIXING

The door and frame is only to be installed into brick, block masonry or timber stud walls with a minimum 70mm depth and providing 60minute fire resistance. Any voids between the lining must be filled as above. Jamb and heads are to be fixed to the opening with steel screws at 600mm maximum centers with first fixing 100mm from each end, fixings must penetrate the wall by a minimum of 50mm. There must be a minimum of 3 fixings of each jamb. It is not necessary to fix the frame head, although packers must be inserted.

INTUMESCENT

Where a Blue Outer with a Green or Silver inner plug is present the intumescent seals provided by Birmingham Joinery must be used. Any replacing or removal may invalidate certification.

Where a red inner plug is present intumescent strips must be fitted to the door or frame perimeter; the number of strips used and type is dependent on the door size and configuration. Please see relevant global assessment for confirmation fire door assessment that is applicable. Approved intumescent manufacturers and types can be found by contacting Birmingham Joinery.

IRONMONGERY

If the door or frame carries a Blue Outer plug with a Green or Red inner plug then the Ironmongery used must comply with the relevant global assessment reports.

The global assessment code that relates to your order will be noted on order acknowledgment and delivery note. They are available on request.

If a factory hung doorset has been supplied and carries a Blue Outer, Silver Inner plug then only the ironmongery supplied with the set may be used. Removal or substitution may invalidate the fire rating and certification.

Please follow manufacturer's instructions for correct installation of ironmongery.

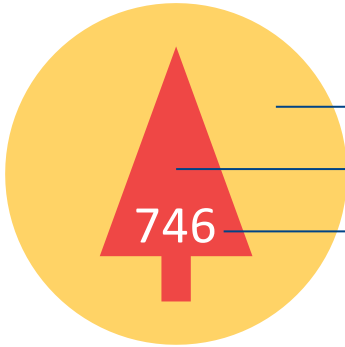
MODIFICATIONS

Any modification of this door, including Glazed apertures, machining or fitting of air transfer grilles, trimming of doors, removal of hinges or intumescent or removal of factory fitted ironmongery will VOID the certification and invalidate the fire rating.



Q MARK FIRE DOOR PLUGS

A plug detailing the below will be visible inside the rebate on the jamb of each door frame supplied and on the top edge of each door. FD60 Doors will be plugged in accordance with the chart below.



- Outer colour indicates period of fire resistance
- Inner colour represents manufacturing status
- Number indicates unique member's certification number

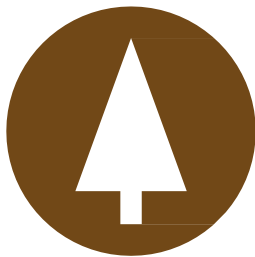
OUTER COLOUR KEY



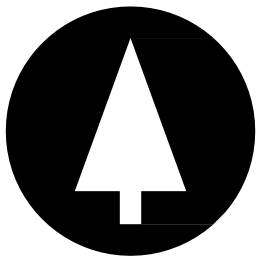
YELLOW
30



BLUE
60



BROWN
90



BLACK
120

INNER COLOUR KEY



RED
Approved door
intumescent not
yet fitted



GREEN
Approved door with
factory fitted
intumescent



ORANGE
Approved factory
fitted glazing



SILVER
Certified factory
hung doorset

Plugs are fitted on the top edge of the door or the head of the frame.



AFTERCARE & DOOR MAINTENANCE

Regular checks and maintenance are critical to ensuring a door is still performing to its required standard. Every 6 months a door should be checked thoroughly, ideally by a third-party accredited fire door maintainer.

The inspection must cover the following:

Gaps - gaps between door leaf and frame are 3mm, any deviation will require adjustment or replacement.

Intumescent seals - are still in good condition and are not broken or missing.

Closer - Door closer is working correctly and shutting door fully.

Ironmongery - all essential ironmongery is still in place and functioning correctly. Including correct Fire Door Keep Shut or Fire Door Keep Locked signage.

Vision panels - Glass is not cracked or broken.

Our doors can be cleaned with a damp cloth and soapy water, avoid abrasive materials or chemicals. If you are unsure, please get in touch with our sales team for more information or advice.





birmingham
joineryltd

Bespoke Joinery • Door Manufacturer

Address

Patrick House,
Talbot Way,
Small Heath,
Birmingham
B10 0HJ

Contact

0121 772 8683
sales@birminghamjoinery.com
www.birminghamjoinery.com

Timber Fire
Door
Manufacture

